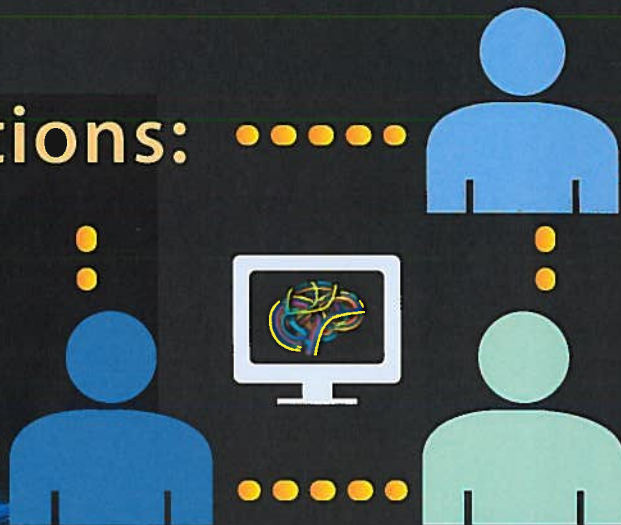


Uncovering Connections:

Imaging Advances in
Autism, Brain Trauma,
and Alzheimer's Disease



February 3, 2014
8:00am – 5:00pm

Lister Hill Auditorium
National Institutes of Health

Over the past five years, the contribution of biomedical **imaging** to research and development in the **neurosciences** has exploded.

The collision between advances in imaging technology and advances in our understanding of the pathogenesis and quantitative assessment of a variety of neurological diseases has been **outstanding**.

We're glad you can join us for a unique and multidisciplinary discussion that will explore the potential imaging connections between three of the most pressing national priorities in neuroscience.

Message from the Organizing Committee



At first glance, one might consider the title of this symposium a bit ambitious for a one-day session.

While we would certainly agree, we also believe that in order to make ambitious progress in our understanding of these three important conditions, we must ask provocative questions. That is why we are focusing on the areas of potential scientific overlap between these three seemingly distinct conditions, exploring the potential imaging connections between them.

To help us work through the technical advances, we're thrilled at the tremendous expertise of our speaker panels. Our scientific discussion will also be augmented by an important patient perspective for each session. We're also excited about the response from the extramural and intramural research community, as we expect to have both a strong mix of neuroradiologists, neuroscientists, program officers and other federal research leaders. Altogether, we are excited about the potential for a high-level discussion.

Throughout the day, we will learn how these three conditions have much in common: they are increasing in incidence and prevalence; their pathogenesis is not completely understood; objective assessment of disease severity and response to treatment is quite variable; and their diagnosis, severity, prognosis, and response to treatment are being revealed through breakthroughs in structural, functional and molecular forms of biomedical imaging.

At the end of the day, we hope to have uncovered some potential new avenues for high-impact science, multidisciplinary collaboration, and patient-centered approaches - which in the end will lead to an accelerated agenda for improved patient care.

Thank you for taking the time to join us today, and I urge you to participate in the discussion.

Sincerely,

A handwritten signature in black ink that reads "Steven Seltzer MD". The signature is written in a cursive, slightly slanted style.

Steven E. Seltzer, MD
Chair, Symposium Organizing Committee

Welcome

7.30

Registration Opens

7.30-8.00

Breakfast served in the Lister Hill foyer

8.00

Steven E. Seltzer, MD

Chair, Department of Radiology

Brigham and Women's Hospital

Welcome and Introductions

*Session 1: Imaging
Advances in Autism*

8.15

Geoffrey Young, MD

Session Moderator

Harvard Medical School

Welcome and Introductions

8.20

Stephen Dager, MD

University of Washington

Spectroscopy and Functional Connectivity

8.50

Robert McKinstry, MD, PhD

Washington University in Saint Louis

DTI and Structural Connectivity

9.20

John Sickels

Minorleagueball.com

Patient Impact and Perspective

9.45

Coffee Break

*Session 2: Imaging Advances
in Brain Injury*

10.00

William Bradley, Jr., MD, PhD

Session Moderator

UCSD

Welcome and Introductions

10.05

Pratik Mukherjee, MD, PhD

UCSF

DTI and Functional Connectivity

10.35

Roland Lee, MD

UCSD

MEG

11.05

Alexander Lin, PhD

Brigham and Women's

MR Spectroscopy

11.35

Priming the Pump: Connections so Far?

All Panelists

12.00

Lunch

*Session 3: Imaging Advances
in Alzheimer's Disease*

12.45

Carolyn Meltzer, MD

Session Moderator

Emory

Welcome and Introductions

12.50

Satoshi Minoshima, MD, PhD

University of Washington

Molecular Imaging

1.20

Jeffrey Petrella, MD

UNC Chapel Hill

fMRI

1.50

Cynthia Bens

Alliance for Aging Research

Patient Impact and Perspective

*Session 4: Connections
Discussion*

2:15

Connections Discussion

Steven E. Seltzer, MD

Session Moderator

All Panelists

3.15

Coffee Break

*Session 5: Technology
Development*

3.30

Srinivasan Mukundan, Jr., MD, PhD

Alexander Lin, PhD

Session Moderators

Brigham and Women's

Panelists

Anders Dale, PhD

UCSD

Joe Helpern, PhD

MUSC

Larry Wald, PhD

MGH

Roderic Pettigrew, PhD, MD

NIBIB

Walter Koroshetz, MD

NINDS

Neil Buckholtz, MD

NIA

4.45

Steven E. Seltzer, MD

*Brigham and Women's Hospital
Summary*

6.00-8.00pm

Networking Reception

*Hyatt Regency Hotel
Bethesda, MD*

NOTES



A series of horizontal lines for writing notes, with a vertical bar on the right side of each line.



NOTES

Lined writing area with 15 horizontal lines and a vertical margin line on the left.

*A special "Thank You" from our
Organizing Committee*

*Steven E. Seltzer, MD, Chair
William G. Bradley, Jr., MD, PhD
Carolyn C. Meltzer, MD
Srinivasan Mukundan, MD, PhD
Alexander P. Lin, PhD*

